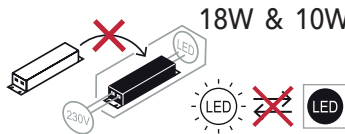


Meldon Adjustable Downlight



18W & 10W,15W,18W Selectable & 15W, 22W, 28W Selectable



Selected Models



Selected Models



READ THESE INSTRUCTIONS THOROUGHLY BEFORE INSTALLATION KEEP THESE INSTRUCTIONS FOR FUTURE REFERENCE.

IMPORTANT:

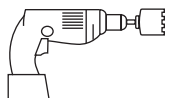
This product must be installed by a qualified electrician or competent person, and in accordance with current building and IET wiring regulations.

BOX CONTENTS

This lighting fixture has been properly packed to avoid damage during transit. Before commencing with the installation carefully inspect the luminaire to confirm there is no damage. DO NOT INSTALL if any damage has occurred to the fixture or any of its components:

- Light Fitting
- Instruction Manual

TOOLS REQUIRED



- Hole Saw / drill



- Screwdriver

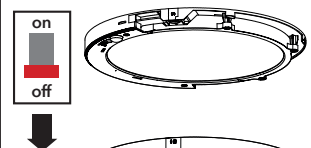


- Cable

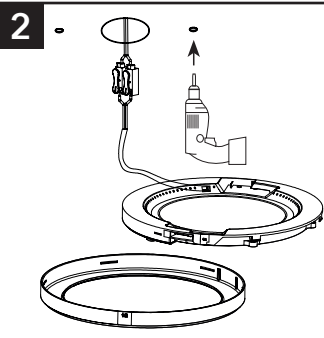
INSTALLATION INSTRUCTIONS

1 Surface Mount

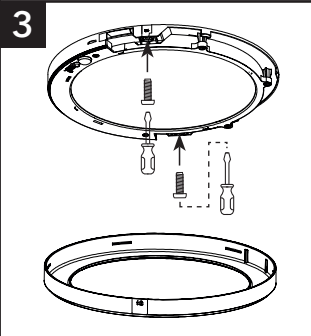
Fix using screws and cover



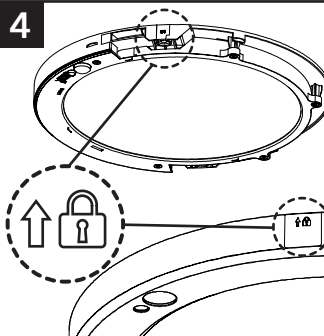
2



3

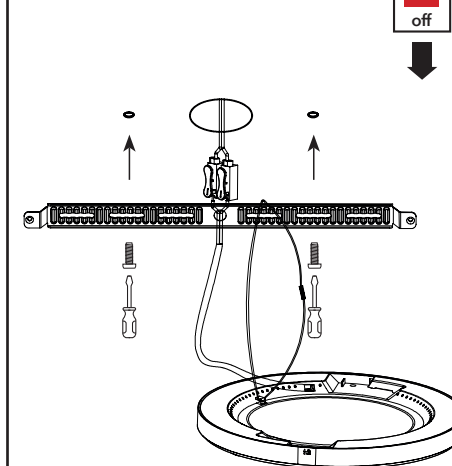


4



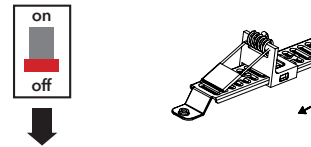
1 Surface Mount

Fix using screws and bracket

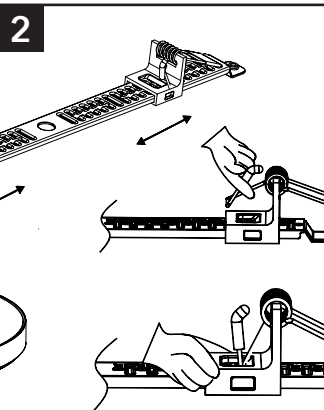


1 Recessed

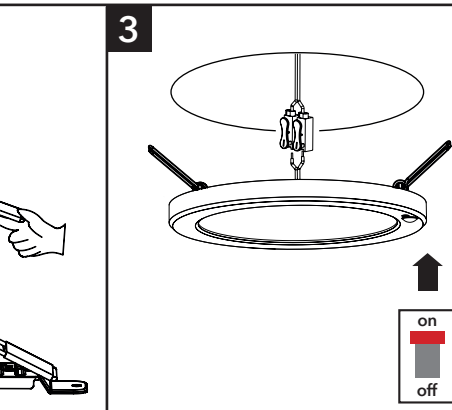
Spring adjustable instruction



2



3



Meldon Adjustable



Downlights

PLEASE READ THESE INSTRUCTIONS BEFORE INSTALLATION.



WARNING: Risk of electric shock! Isolate the mains power before proceeding.

- Turn off the mains power before performing inspections, installation, or removal
- Verify that the supply voltage is correct by comparing it with the luminaire label information
- It is the installers responsibility to ensure installation is suitable for the total load of the luminaire(s). The supply cable, fuses/circuit breakers must be correctly rated for the electrical load and considering for any transient inrush currents that may occur
- Do not perform insulation strength or resistance tests on installed luminaire(s) connected

Electrical connection wiring



Terminal not supplied.

Please see fitting instructions overleaf.

DISPOSAL

The light source of this unit is not replaceable; when the light source reaches its end of life the whole luminaire shall be replaced.

Disassembly instructions for end of life disposal available on website.

Disposal of Electronic Equipment WEEE Directive 2002/96/EC This product falls within the scope of the Waste Electrical & Electronic Equipment Directive (WEEE), which means the product should not be disposed of as normal household waste. Please recycle where facilities exist or check with your Local Authority. RoHS - All components and materials used in this product are RoHS 2002/95/EC compliant.

Specifications may change from time to time. The information contained in this leaflet is for guidance only and should not be considered as always accurate and should be treated as not representative.

WARRANTY

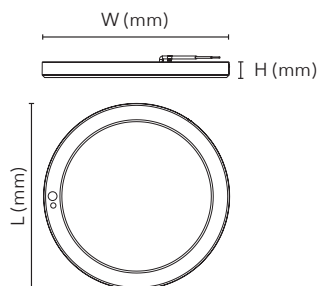
This luminaire is warranted for a period of 3 years from the date of purchase.** The warranty could be invalidated should the light fitting not be installed according to these instructions, outside the scope of the specification or the product has been altered or tampered with in any way. Please see website for terms and conditions.

PRODUCT TEMP SPECIFICATION

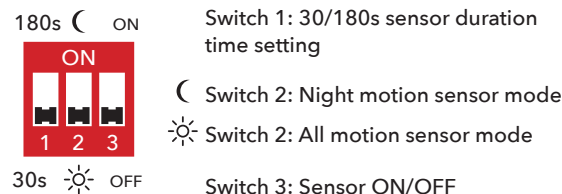
Standard 0° to +40°C

MELDON ADJUSTABLE DIMENSIONS

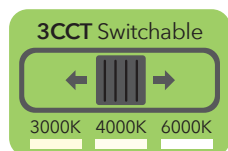
Part No.	Description	Watts	L (mm)	W (mm)	H (mm)	Weight	Hole Cut-Outs
430745	Meldon Adjustable 3CCT	18W	220	220	18	0.40Kg	65mm - 205mm
430746	Meldon Adjustable 3CCT, PIR	18W	220	220	18	0.40Kg	65mm - 205mm
430747	Meldon Adjustable Selectable, 4000K	10W / 15W / 18W	220	220	18	0.40Kg	65mm - 205mm
430748	Meldon Adjustable Selectable, 4000K, PIR	10W / 15W / 18W	220	220	18	0.40Kg	65mm - 205mm
430749	Meldon Adjustable Dimmable, 3CCT	18W	220	220	18	0.40Kg	65mm - 205mm
430773	Meldon Adjustable Selectable, 3CCT	15W / 22W / 28W	335	335	25	0.85Kg	65mm - 310mm
430774	Meldon Adjustable Selectable, 3CCT, PIR	15W / 22W / 28W	335	335	25	0.85Kg	65mm - 310mm
430775	Meldon Adjustable Selectable, 4000K	15W / 22W / 28W	335	335	25	0.85Kg	65mm - 310mm
430776	Meldon Adjustable Selectable, 4000K, PIR	15W / 22W / 28W	335	335	25	0.85Kg	65mm - 310mm



PIR Sensor (where applicable)



Adjustable Wattage (where applicable)



FITTING INSTRUCTIONS

Surface Mount

Fix using screws and cover

1. Isolate the circuit and remove bezel
2. Connect power cable to terminal, as per diagram
3. Fix lamp to ceiling surface using screws provided
4. Select power/colour temperature (if applicable)
5. Install bezel to lamp body and ensure lock marks are aligned. When all lamps are installed, turn power on

Surface Mount

Fix using screws and bracket

1. Isolate the circuit and remove bezel
2. Connect power cable to terminal, as per diagram
3. Fix bracket to ceiling surface using screws provided
4. Select power/colour temperature (if applicable)
5. Twist lamp onto bracket to secure.
6. Install bezel, when all lamps are installed, and then turn power on

Recessed

Spring adjustable instruction

1. Isolate the circuit and remove bezel
2. Adjust springs to suitable size position according to ceiling cut-out
3. Twist lamp onto bracket
4. Select power/colour temperature (if applicable)
5. Pull up springs, install lamp onto ceiling cut-out
6. Install bezel to lamp body and then power on

This product contains a light source of energy efficiency Class F.